


Cleaning the Air Filter

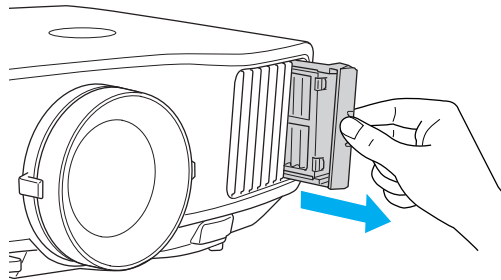
Your projector includes an air filter to ensure the best performance. If dust collects on the air filter (on the side of the projector), you see a message on the screen telling you to clean the filter, or  the Temp light flashes green, clean the filter. Dust clogs prevent proper ventilation and can cause overheating, which can damage the projector.

note

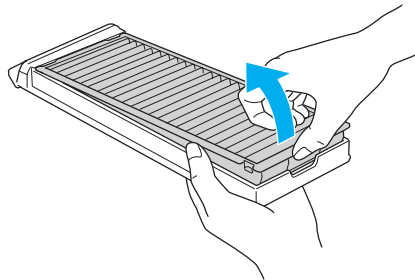
To order replacement air filters, request part number V13H134A17.

Follow these steps:

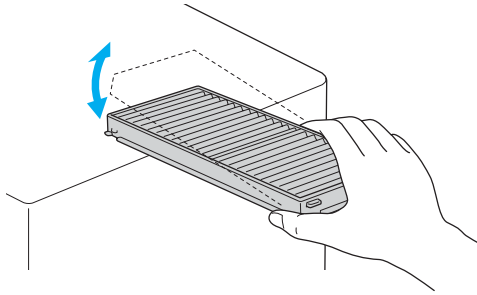
1. Press the power button on the back of the projector to turn it off. After the projector beeps twice, unplug the power cord.
2. Grip the air filter cover tab and remove the air filter cover as shown.



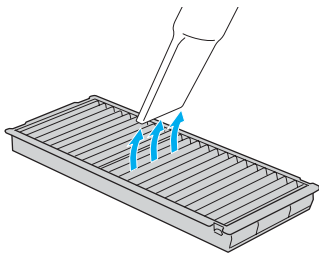
3. Place your finger into the groove and remove the air filter as shown.



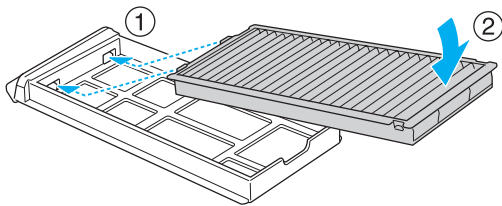
4. With the front of the air filter facing down, tap it four or five times to shake off the dust. Turn it over and tap the other side in the same way to shake off the dust.



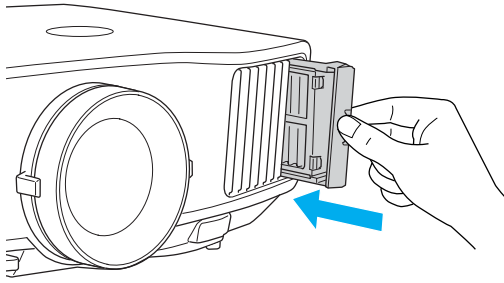
5. To clean any dust remaining on the air filter, use a small vacuum cleaner designed for computer and other office equipment to clean the front. If you don't have one, gently clean the vent with a soft brush (such as an artist's paintbrush).



6. Insert the air filter back into the holes in the cover, then press it firmly into place.



7. Slide the air filter cover in until it clicks into place.

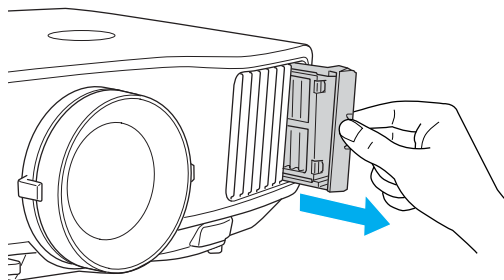


8. If the dirt is difficult to remove, the filter is broken or discolored, or you continue to see air filter related messages even after cleaning, replace the filter as described in the next section. Contact your dealer or call Epson at 800-GO-EPSON (800-463-7766) to obtain a new filter.

Replacing the Air Filter

Follow these steps to replace the air filter:

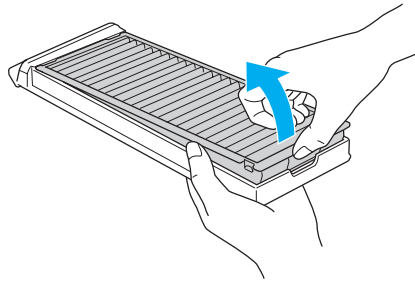
1. Press the power button on the back of the projector to turn it off. After the projector beeps twice, unplug the power cord.
2. Grip the air filter cover tab and remove the air filter cover as shown.



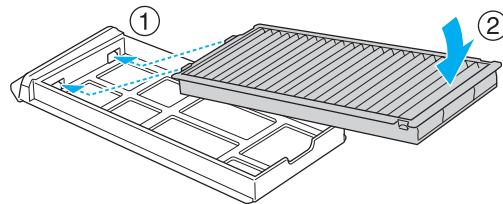
note

The air filter contains Polypropylene. Dispose of used air filters properly in accordance with your local regulations.

3. Place your finger into the groove and remove the air filter as shown.



4. Insert the new air filter into the holes in the cover, then press it firmly into place.



5. Slide the air filter cover in until it clicks into place.

