

note

Turn off this product when not in use to prolong the life of the projector.

Do not turn the projector on immediately after turning it off. Turning the projector on and off frequently may shorten the life of the lamp.

note

Epson recommends that you clean the air filter whenever you replace the lamp.

warning

Let the lamp cool fully before replacing it.


In the unlikely event that the lamp has broken, small glass fragments may be present and should be removed carefully to avoid injury. If the projector has been installed on the ceiling, you should stand to the side of the lamp cover, not underneath it.

If the lamp is used after the replacement period has passed, the possibility that the lamp may break increases. When a lamp replacement message appears, replace the lamp with a new one as soon as possible, even if it is still working.


Replacing the Lamp

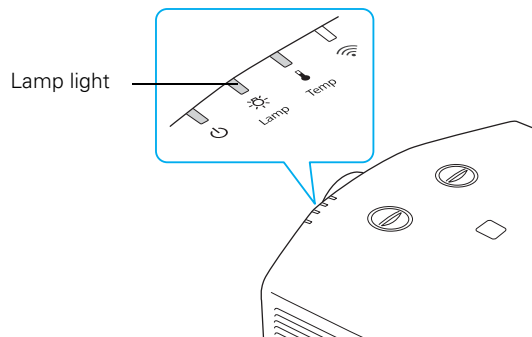
The life span of the projection lamp is about 2000 hours if Power Consumption in the Settings menu is set to Normal (default), and 3000 hours if Power Consumption is set to ECO

It is time to replace the lamp when:

- The projected image gets darker or starts to deteriorate.
- The message Replace the lamp appears on the screen when the lamp comes on.
- The  Lamp light flashes orange.

To maintain projector brightness and image quality, replace the lamp as soon as possible.

You may also need to replace the lamp if t:  Lamp light flashes red.



Contact your dealer or call Epson at 800-GO-EPSON (800-463-7766). Request part number V13H010L62 (G5450WUNL/G5550NL) or V13H010L63 (G5650WNL/G5750WUNL/G5950NL).

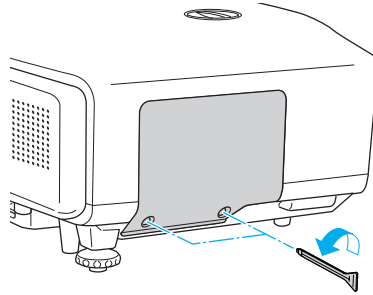
Follow these steps to replace the lamp:

1. Press the power button on the back of the projector to turn it off. After the projector beeps twice, unplug the power cord.
2. Let the projector cool for at least an hour (if it has been on). The lamp is extremely hot immediately after use.

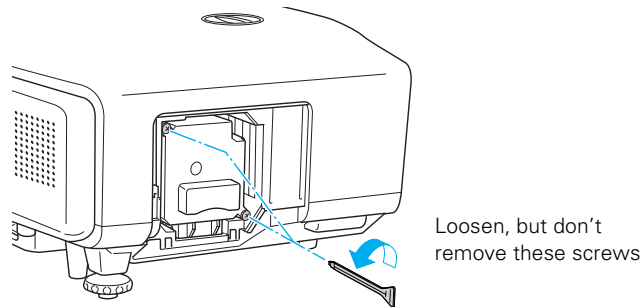
note

Even when the lamp cover is removed, it is still attached to the projector to prevent it from falling when the projector is mounted on the ceiling.

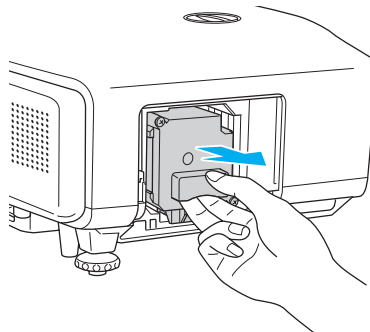
3. Loosen the lamp cover screws (you don't need to remove them). Then remove the lamp cover.



4. Loosen the two screws holding the lamp in place (you can't remove them).



5. Hold the lamp as shown and pull it straight out.

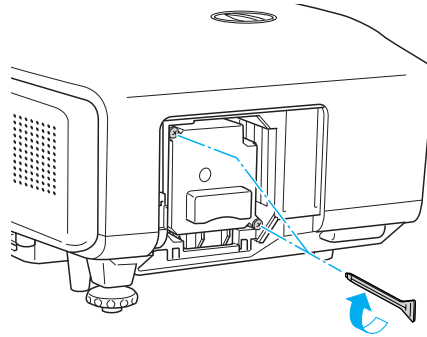


6. Gently insert the new lamp. (If it doesn't fit easily, make sure it is facing the right way.)

note

Ⓜ The lamp(s) in this product contain mercury. Please consult your state and local regulations regarding disposal or recycling. Do not put in the trash.


7. Once the lamp is fully inserted, tighten its screws.



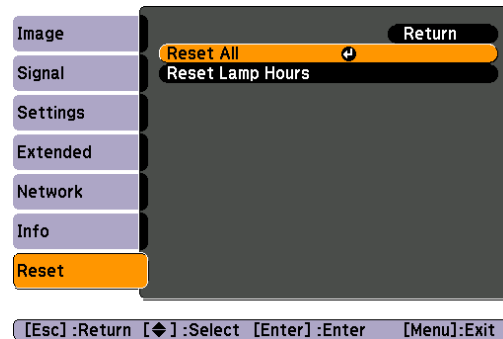
8. Replace the lamp cover, then tighten its screws.
9. Reset the lamp timer as described in the next section.

Resetting the Lamp Timer

After you replace the lamp, you need to reset the lamp timer using the projector's menu.

1. Press the Menu button on the remote control or on the projector's control panel. You see the main menu.
2. Use the  pointer button on the remote control (or the arrow buttons on the projector) to highlight Reset, then press Enter

You see this screen:



3. Select Reset Lamp Hours and press Enter.
4. When you see the prompt, select Yes and press Enter
5. When you're finished, press Menu to exit.