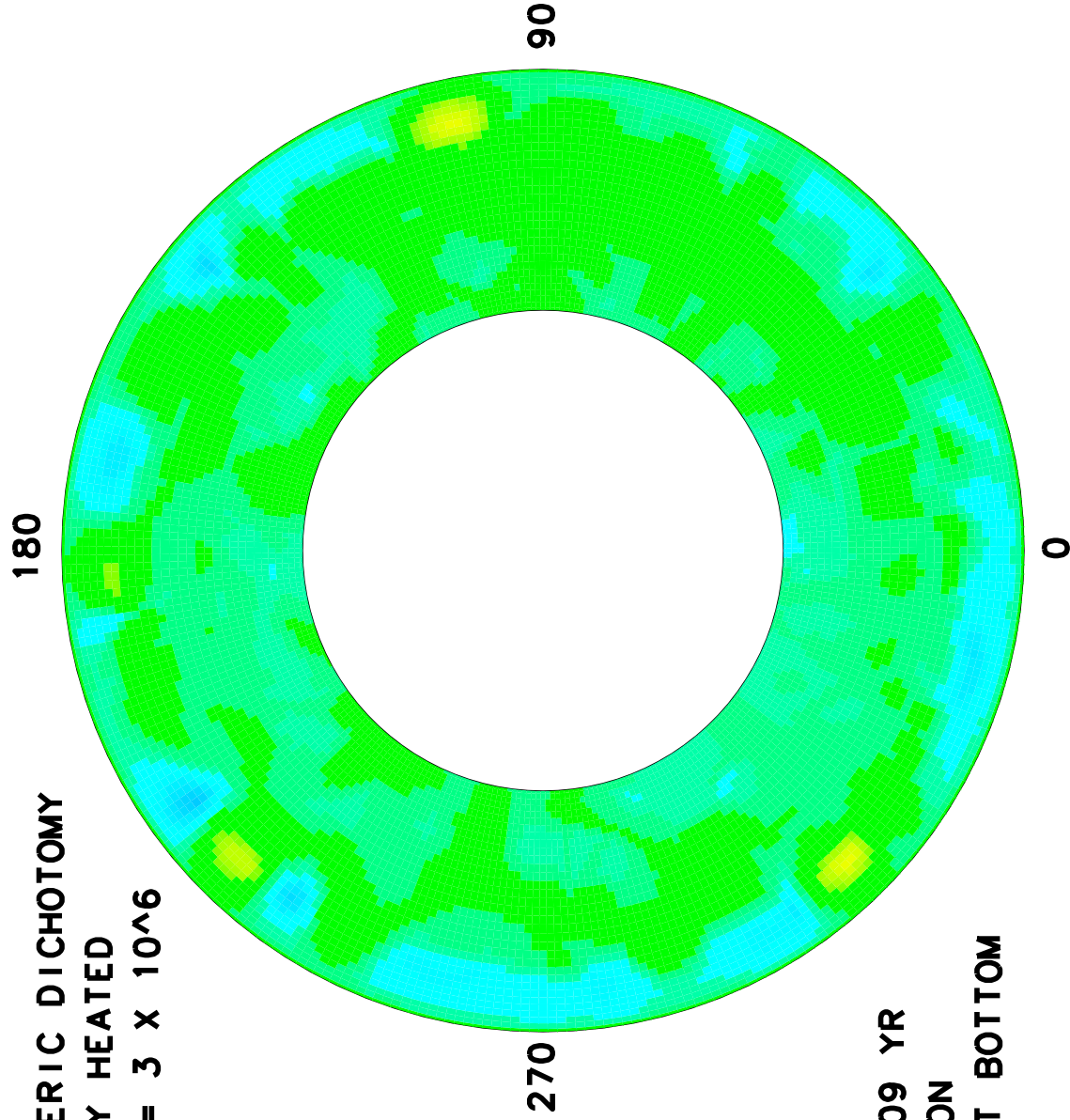
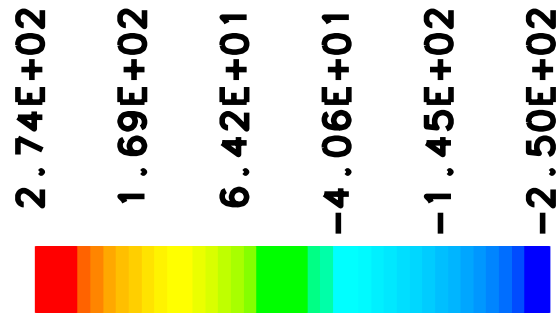


CASE 148 HEMISPHERIC DICHOATOMY
PURELY INTERNALLY HEATED
BOUSSINESQ; RA = 3 X 10⁶
17 JULY 2003



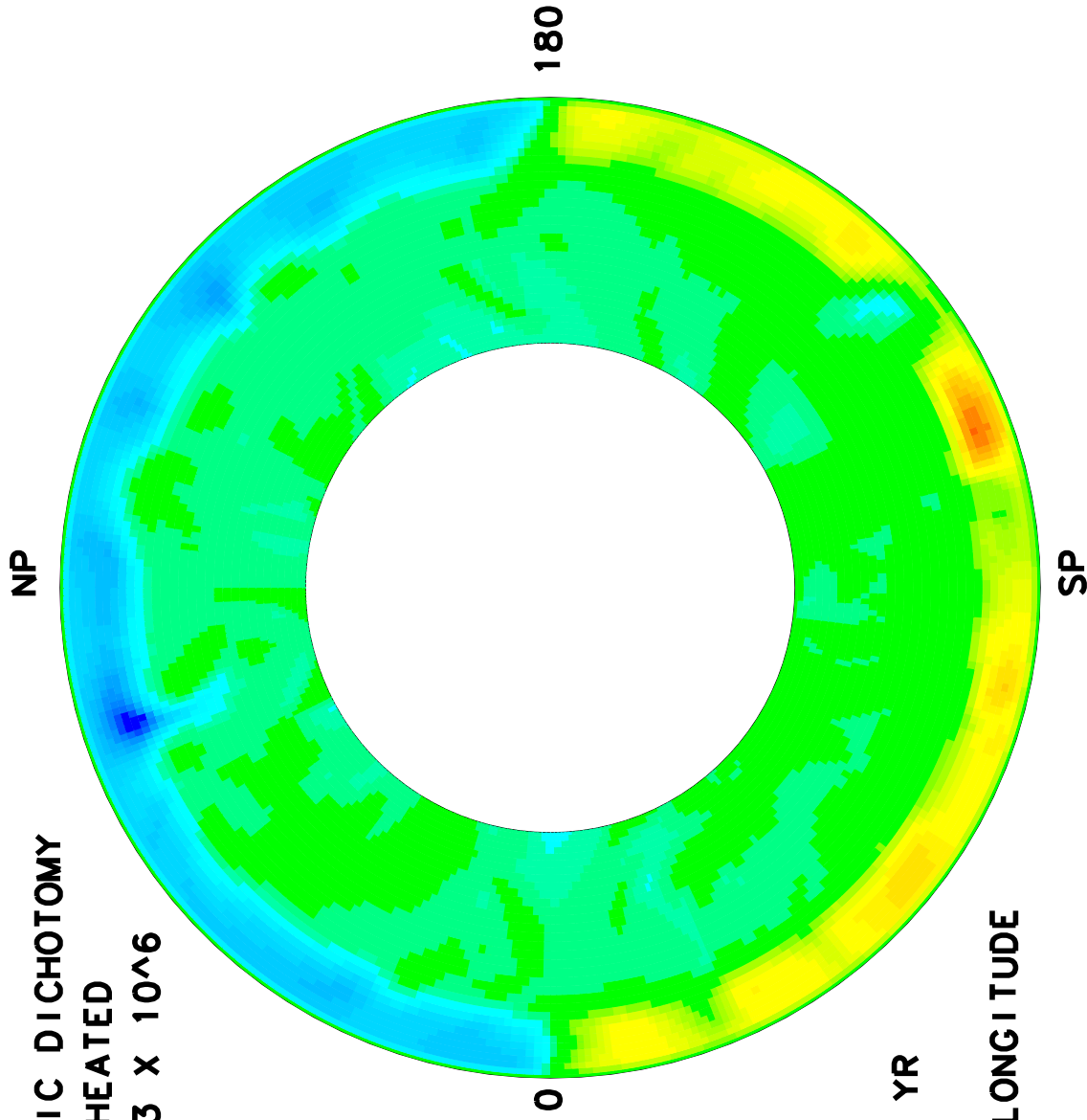
TIME = 5.000E+09 YR
EQUATORIAL SECTION
ZERO LONGITUDE AT BOTTOM

CASE 148 HEMISPHERIC DICHOATOMY
PURELY INTERNALLY HEATED
BOUSSINESQ; RA = 3×10^6
17 JULY 2003

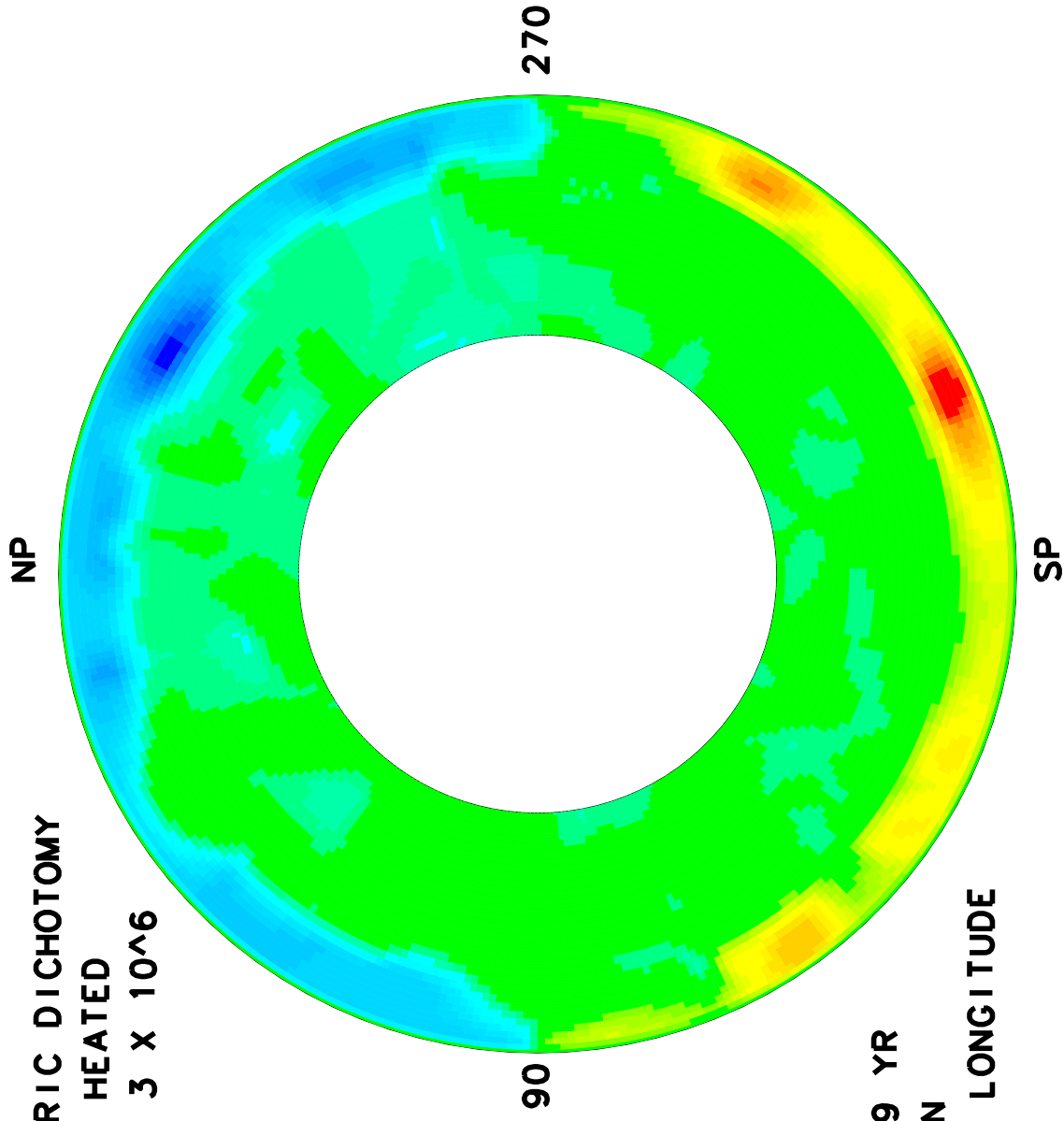


TEMPERATURE K

TIME = 5.000E+09 YR
MERIDIANAL SECTION
ALONG 0 DEGREES LONGITUDE



CASE 148 HEMISPHERIC DICHOATOMY
PURELY INTERNALLY HEATED
BOUSSINESQ; RA = 3 X 10⁶
17 JULY 2003



2.74E+02
1.69E+02
6.42E+01
-4.06E+01
-1.45E+02
-2.50E+02

TEMPERATURE K

TIME = 5.000E+09 YR
MERIDIANAL SECTION
ALONG 90 DEGREES LONGITUDE

