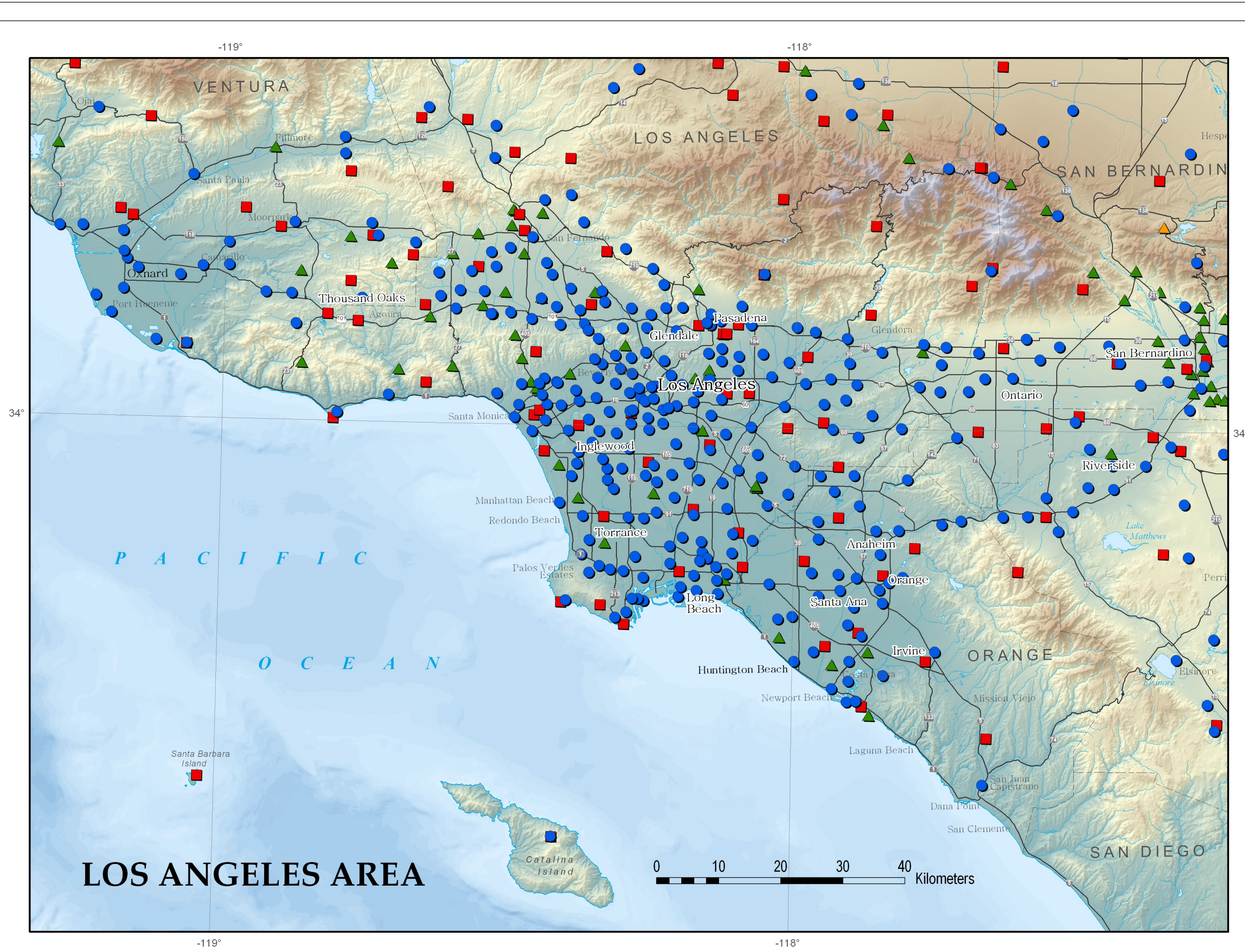
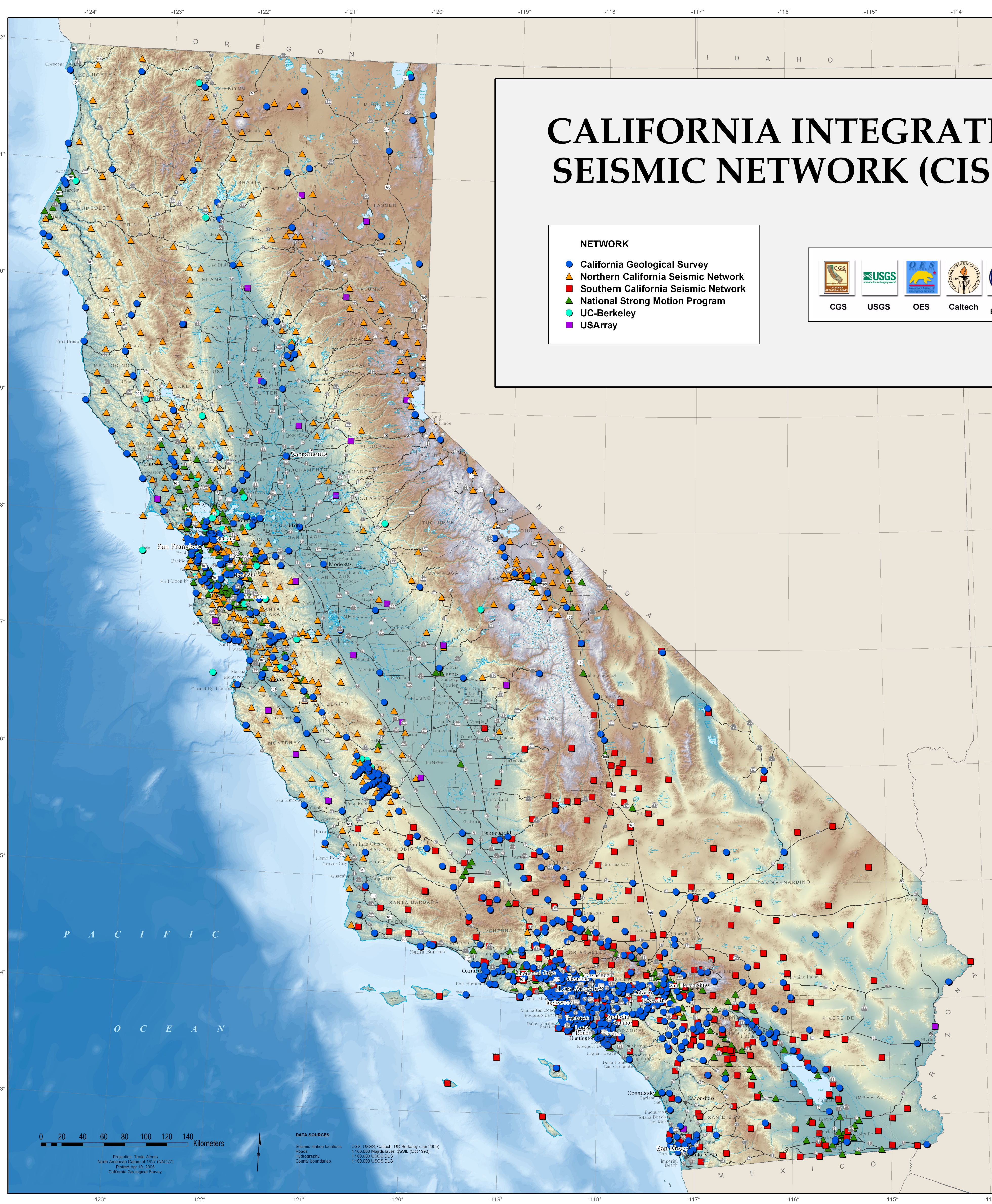


CALIFORNIA INTEGRATED SEISMIC NETWORK (CISN)

NETWORK

- California Geological Survey
- ▲ Northern California Seismic Network
- Southern California Seismic Network
- ▲ National Strong Motion Program
- UC-Berkeley
- USArray



DATA SOURCES
 Seismic station locations: CGS, USGS, Caltech, UC-Berkeley (Jan 2005)
 Roads: 1:100,000 MGRS Base, CASL (Oct 1989)
 Hydrography: 1:100,000 USGS CIG
 County boundaries: 1:100,000 USGS CIG

Projection: Transverse Mercator
 North American Datum of 1983 (NAD83)
 Projected April 10, 2000
 California Geological Survey