

VOLUME 8

NUMBERS 1 AND 2

EARTHQUAKE NOTES

EASTERN SECTION
OF
SEISMOLOGICAL SOCIETY OF AMERICA

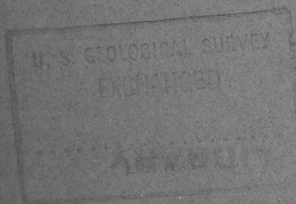
AND

PROCEEDINGS OF THE 1936 JOINT MEETING
WITH THE
SECTION OF SEISMOLOGY
OF THE
AMERICAN GEOPHYSICAL UNION

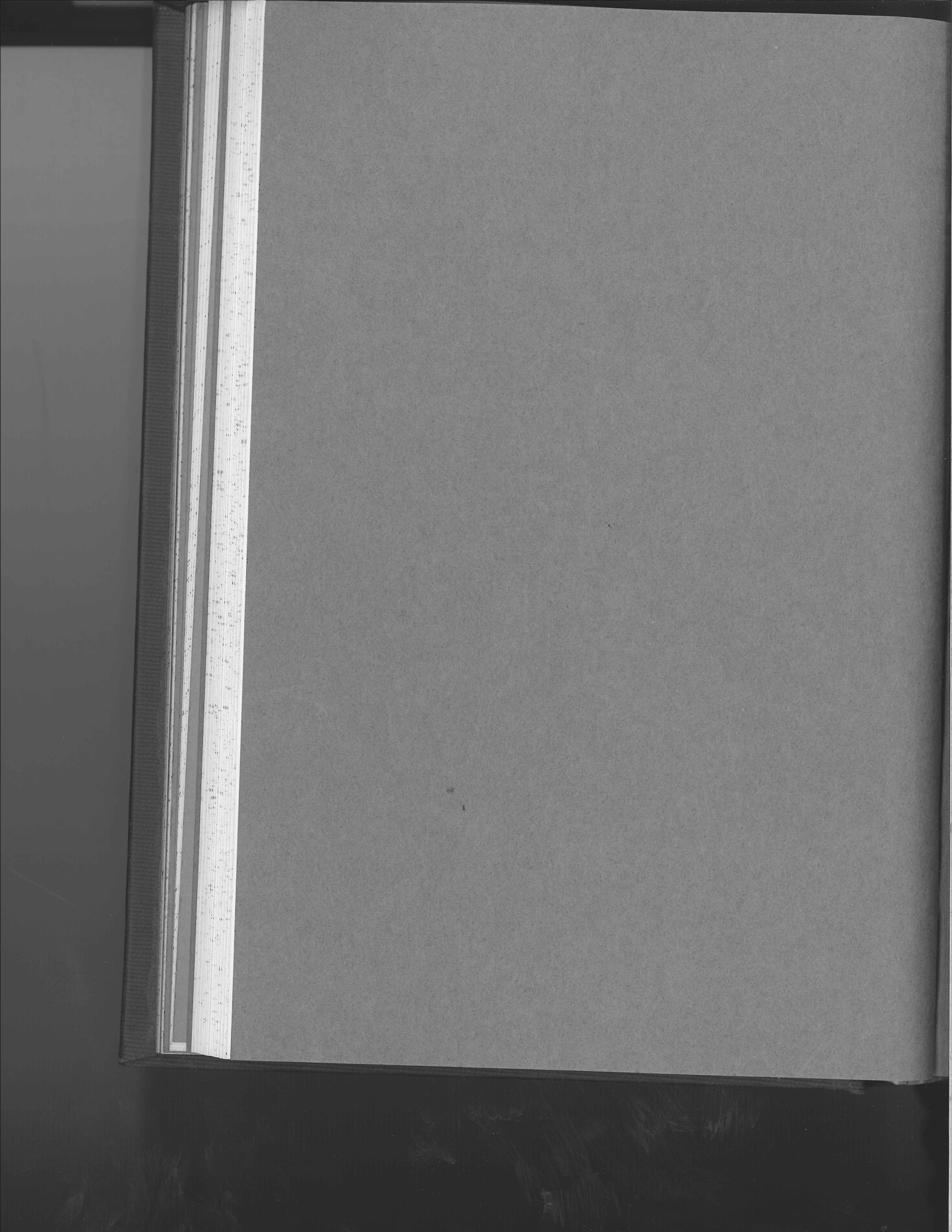
WASHINGTON, D. C.

MAY 1 AND 2, 1936

JUNE, 1936



MAY 1 1936



10.4
10.3

VOLUME VIII

NUMBER 3

EARTHQUAKE NOTES

EASTERN SECTION SEISMOLOGICAL
SOCIETY OF AMERICA

U. S. GEOLOGICAL SURVEY
EXCHANGE
JAN 12 1937

DECEMBER, 1936

