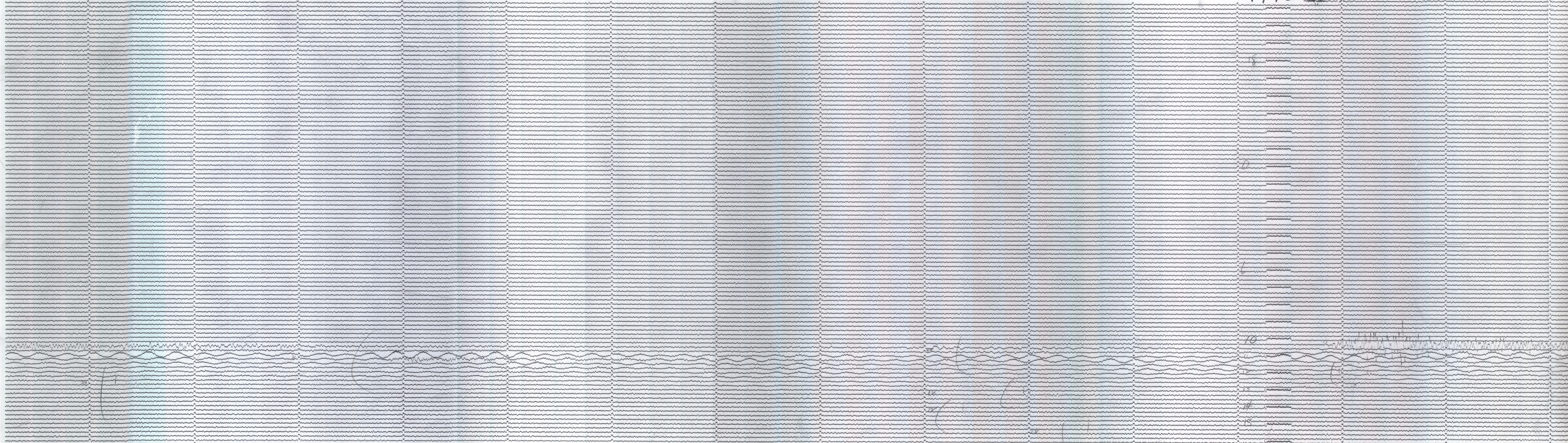


↓ 1445 GCT MAY 20 1960



BERKELEY (HAVILAND)
37°52.4'N, 122°15.6'W, elev. 61m

100KG BENIOFF VERTICAL
T₀=1.0 SEC; T_g=0.4 SEC

UP ↑
DOWN ↓

↑ 1600 GCT MAY 21 1960

BERKELEY BENIOFF VERTICAL