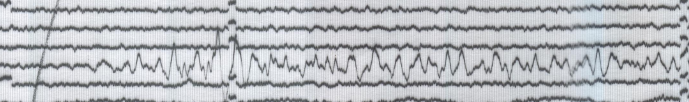
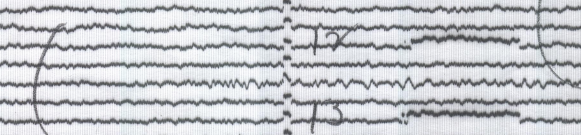
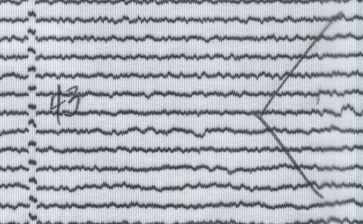


↓ 1615 GCT MAY 21 1960

18
20
0
1
2
4
6
10
11
12
13
14
15
16



↑ 1645 GCT MAY 22 1960

BERKELEY (HAVILAND) 37°52.4'N, 122°15.6'W, elev. 81m
100KG BENIOFF VERTICAL UP ↑
T₀ = 1.0 SEC; T_g = 0.4 SEC DOWN ↓