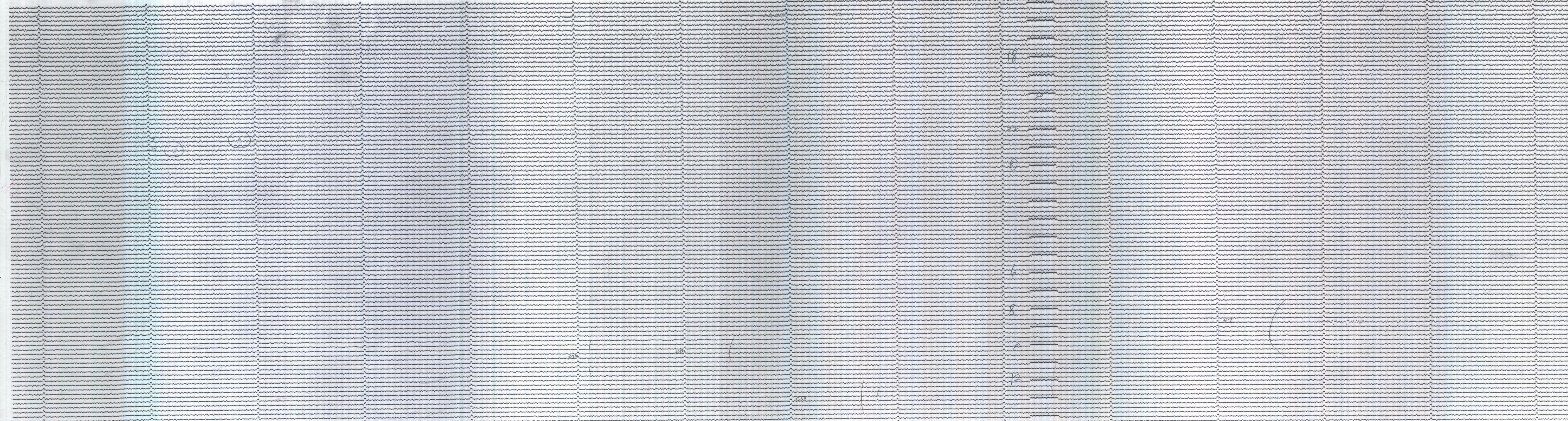


1495 *5/24* MAY 24 1960



1415 *5/25* MAY 25 1960

BERKELEY (HAVILAND) 100KG BENIOFF VERTICAL UP ↑
 37°52.4'N, 122°15.6'W, elev. 81ft T₀ = 1.0 SEC; T_g = 0.4 SEC DOWN ↓

BERKELEY BENIOFF VERTICAL