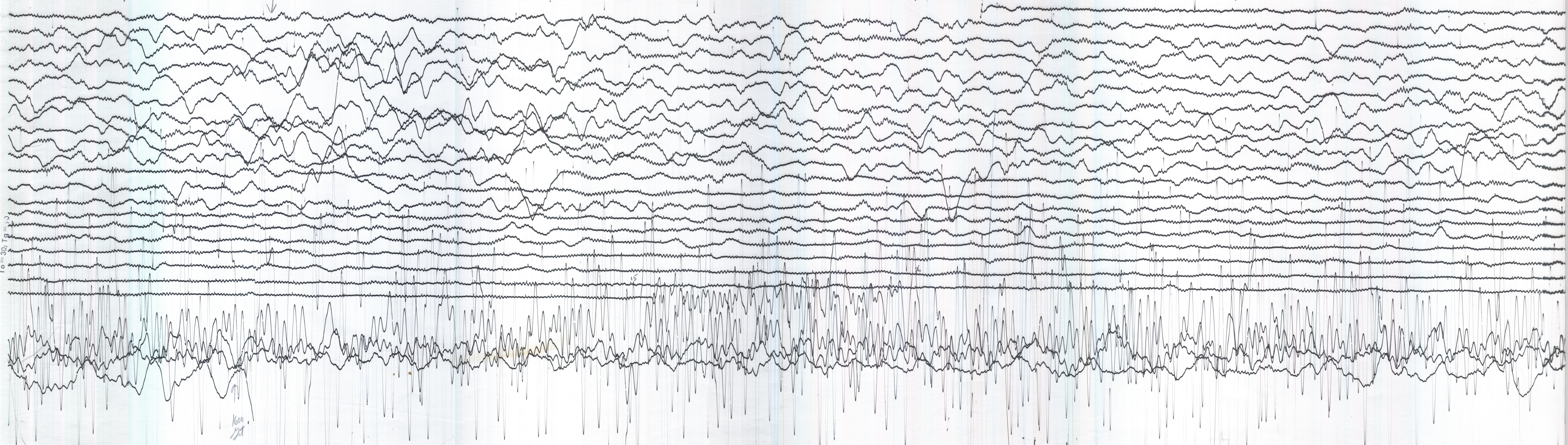


MAY 20 1960

1500 *st*



PRESS-EWING
To = 30; Tg = 90



MAY 21 1960

1600 *st*

3.9 W
5.0 N
3.8 S

BERKELEY (HAVILAND) PRESS-EWING
37°52.4'N, 122°15.6'W, elev. 81m To = 30; Tg = 90



PRESS-EWING