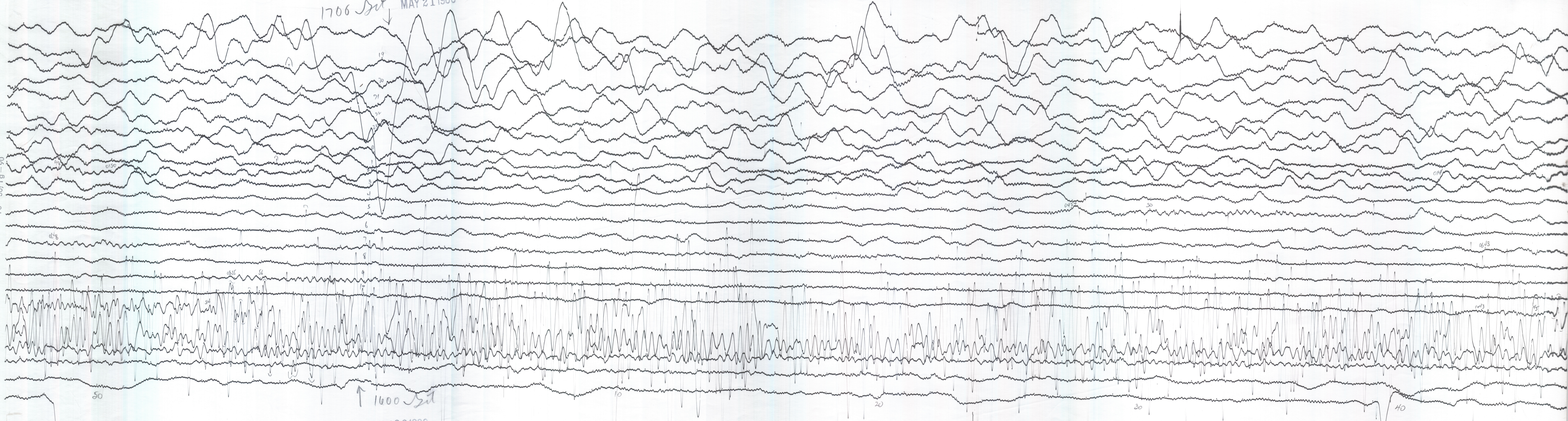


1706 *Set* ↓

MAY 21 1960

PRESS-EWING  
T<sub>o</sub> = 30; T<sub>g</sub> = 90



↑ 1600 *Set*  
MAY 22 1960

BERKELEY (HAVILAND) PRESS-EWING E ↑  
37°52.4'N, 122°15.6'W, elev. 81' T<sub>o</sub> = 30; T<sub>g</sub> = 90 W ↓