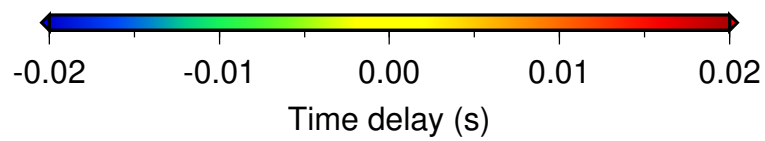
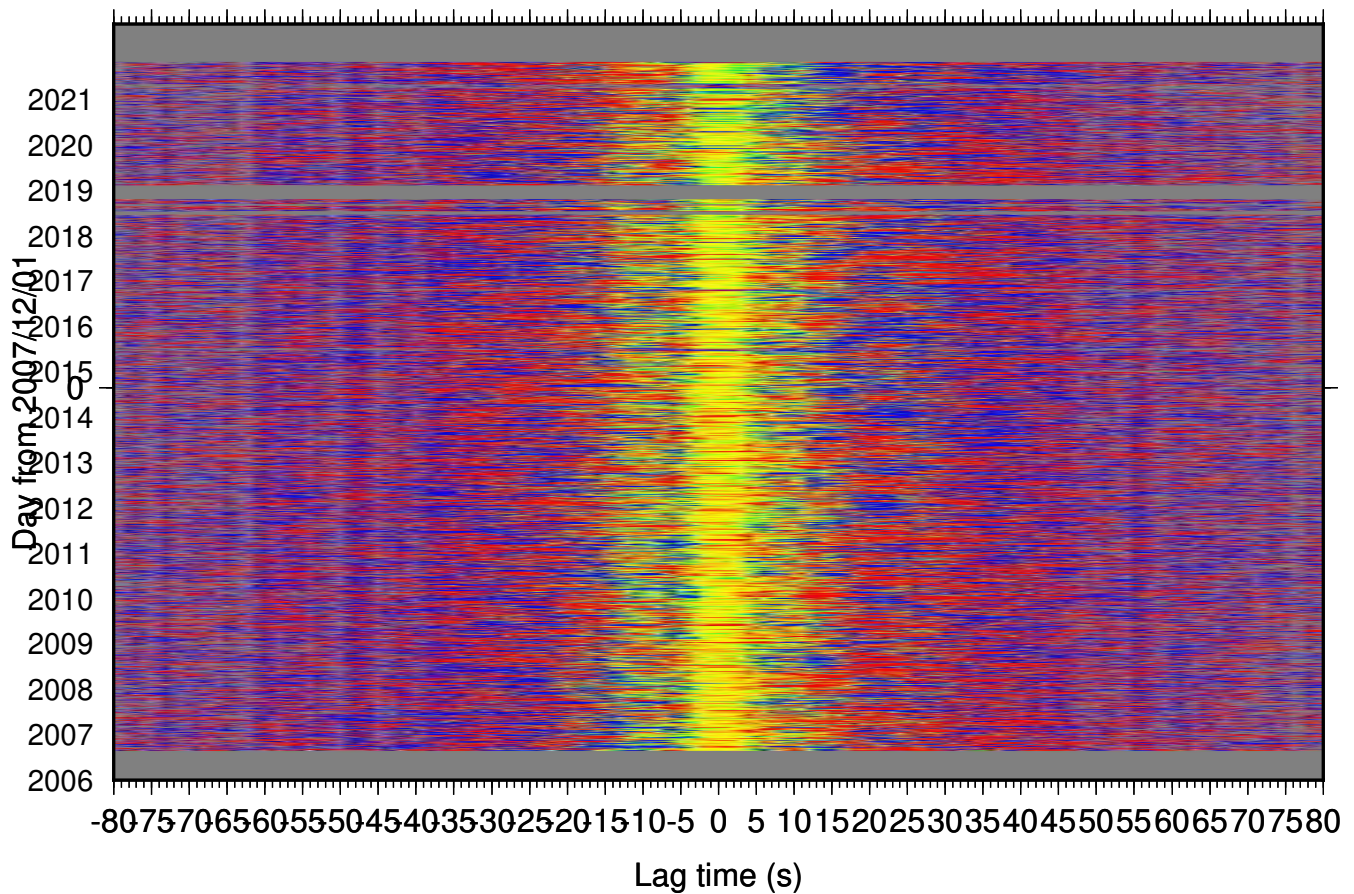
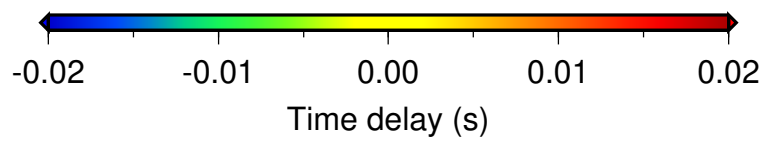
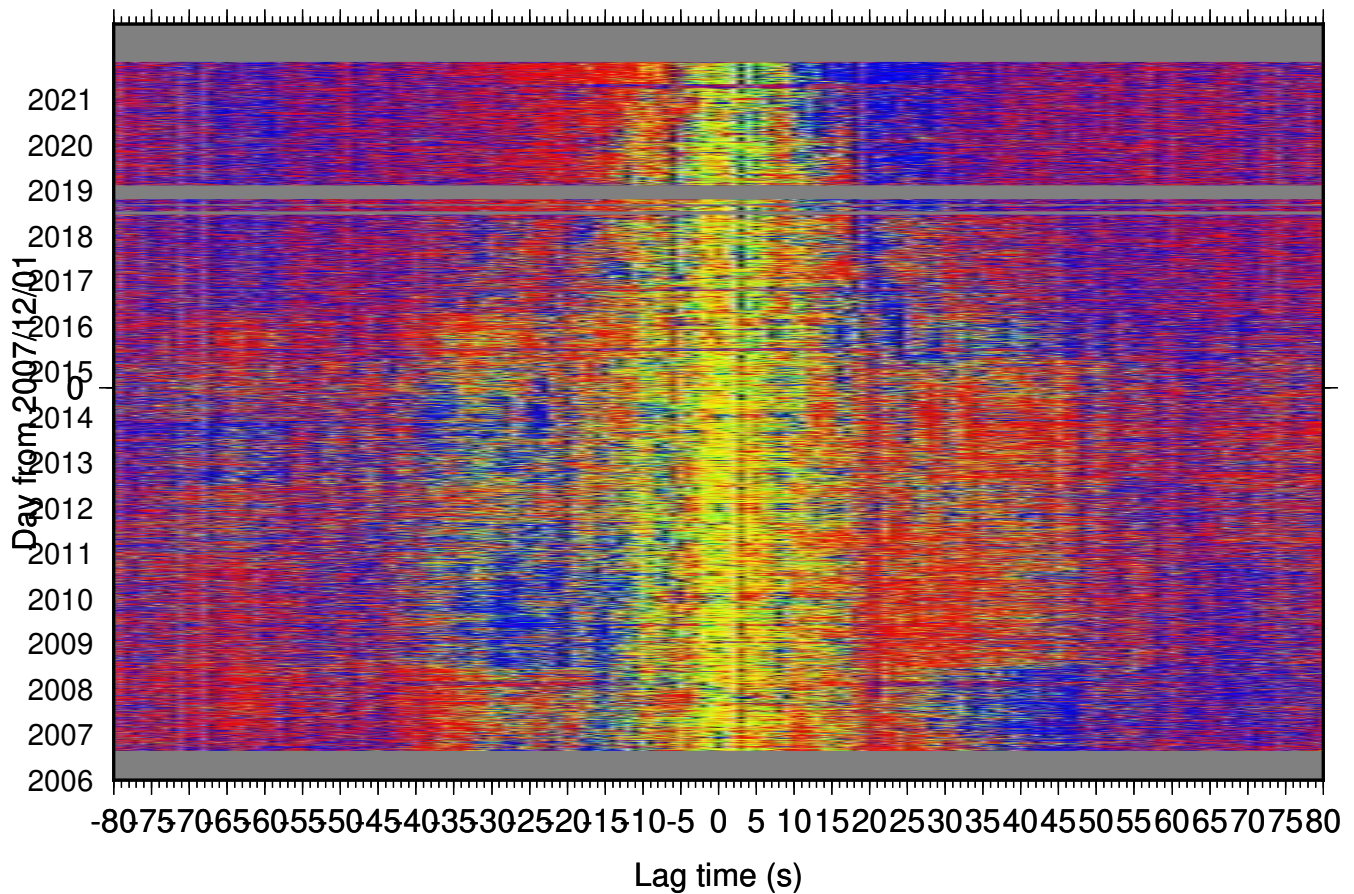


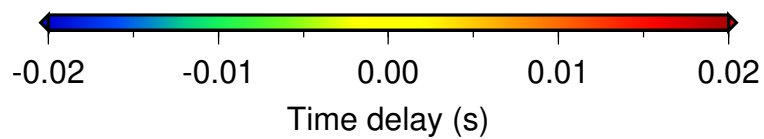
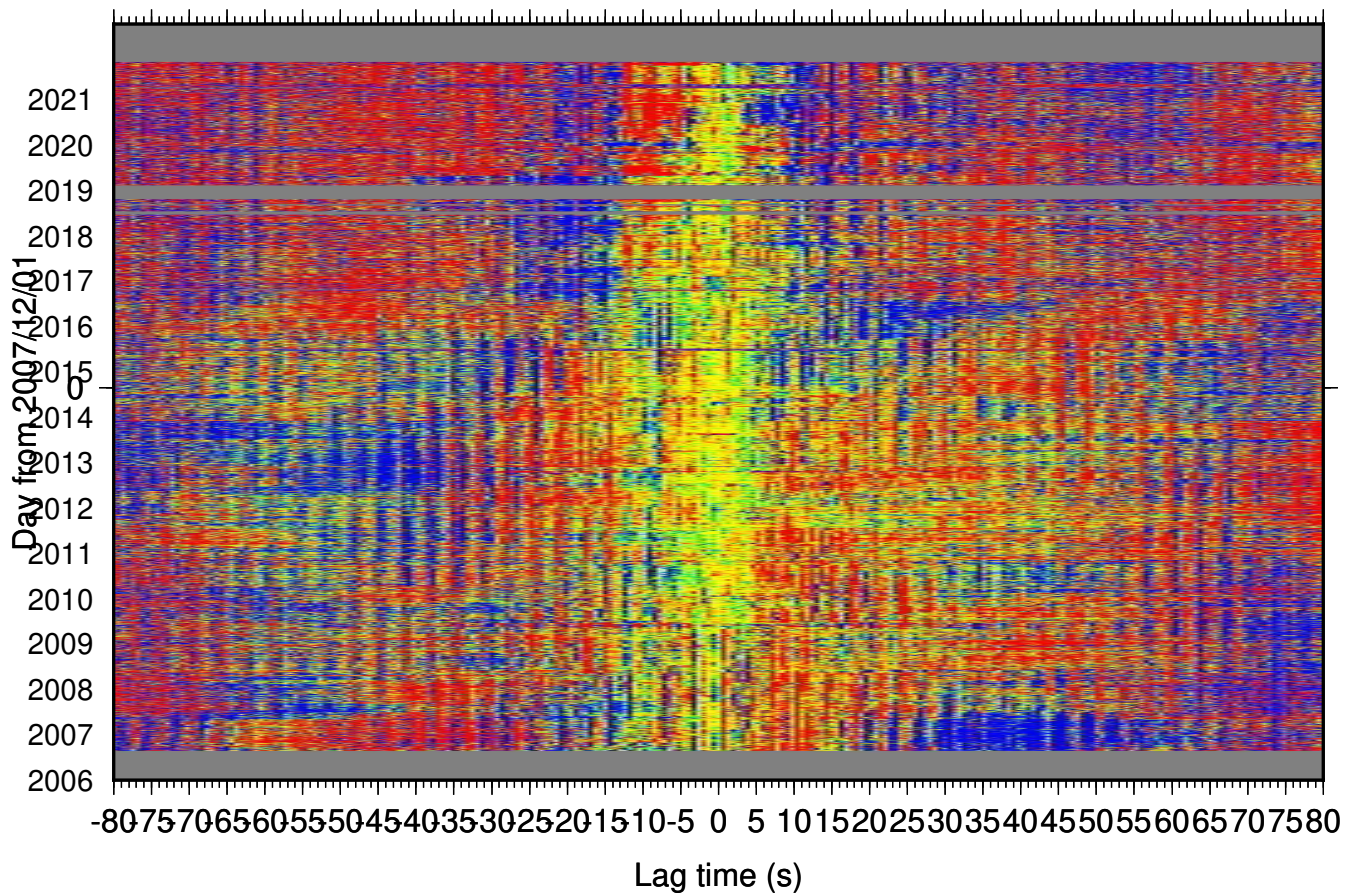
NC.GDXB-NC.GDXB SC.static\_1.0\_0.0\_120.0\_both\_0.85\_0.1\_0.5 0.10-0.90Hz 005\_DAYS



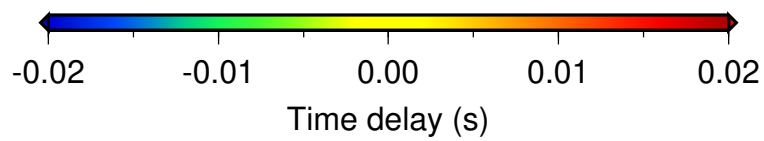
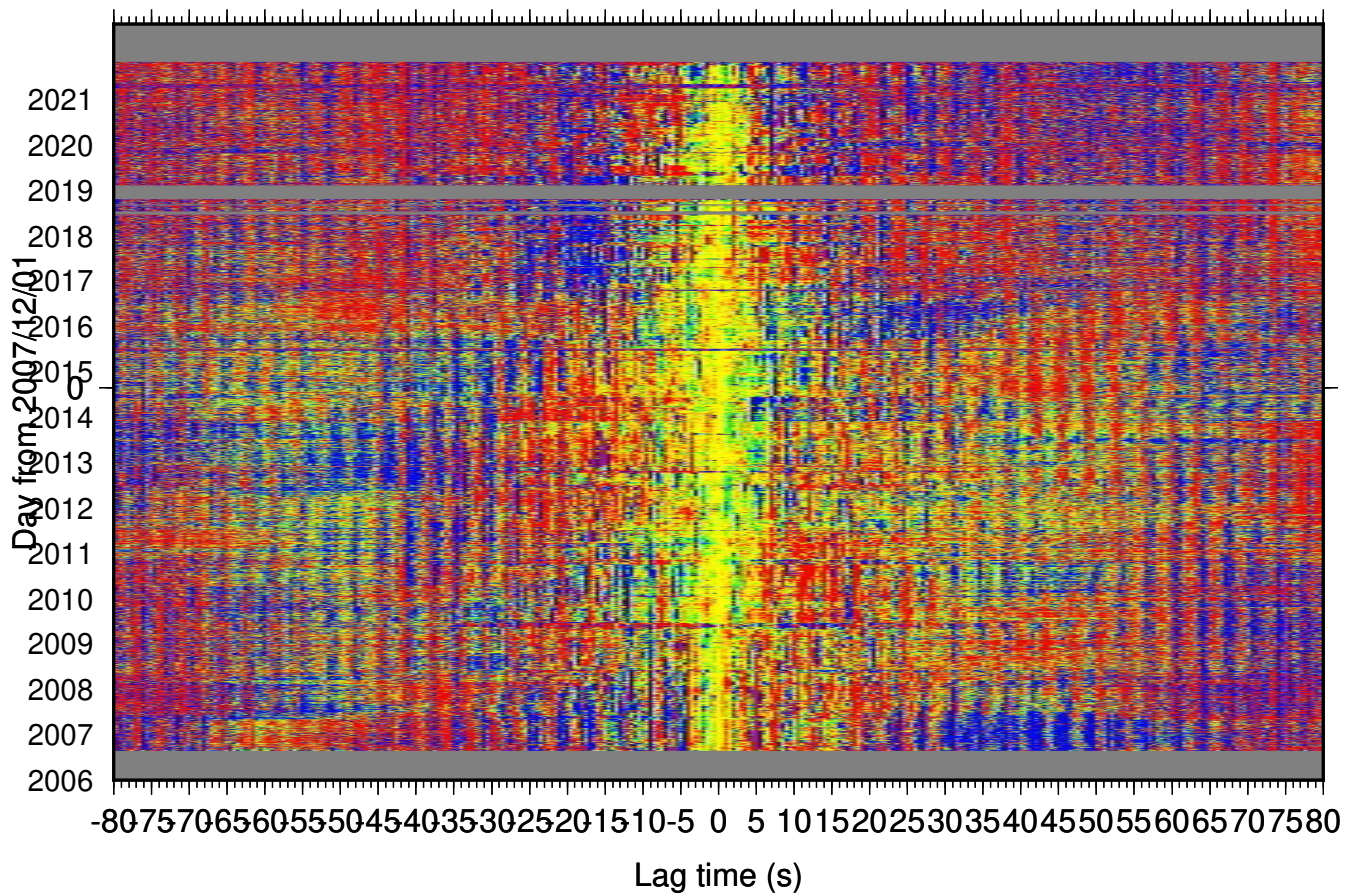
NC.GDXB-NC.GDXB SC.static\_1.0\_0.0\_120.0\_both\_0.85\_0.1\_0.5 0.50-2.00Hz 005\_DAYS



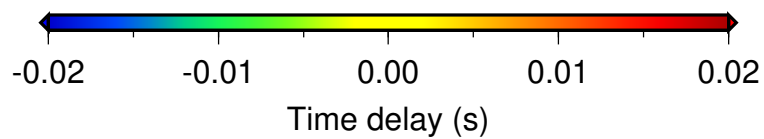
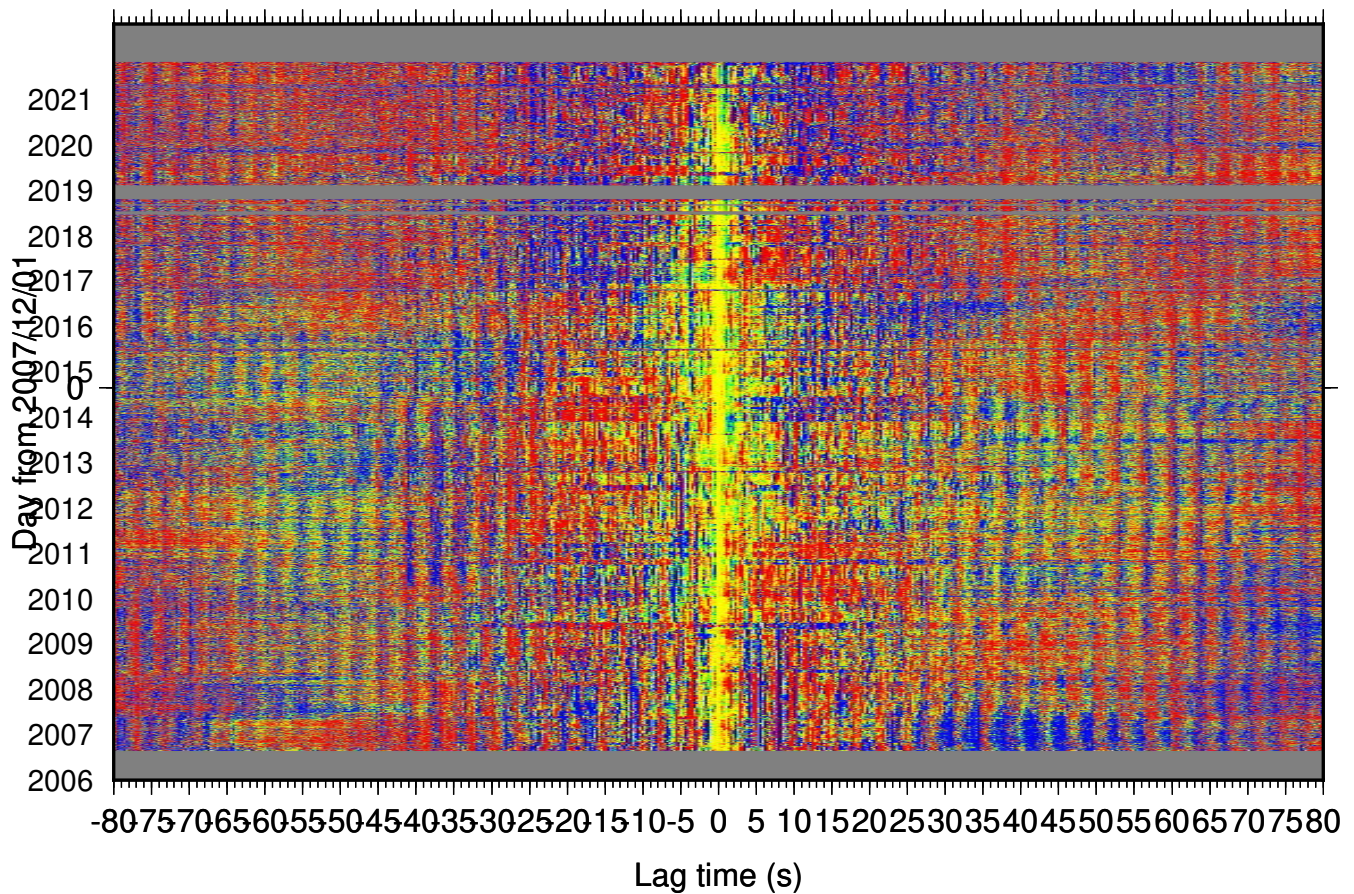
NC.GDXB-NC.GDXB SC.static\_1.0\_0.0\_120.0\_both\_0.85\_0.1\_0.5 0.75-3.00Hz 005\_DAYS



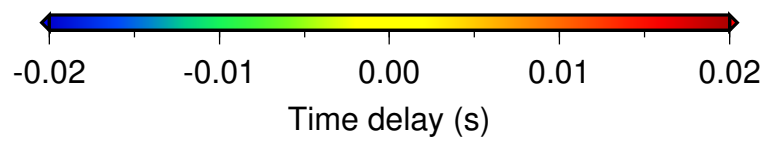
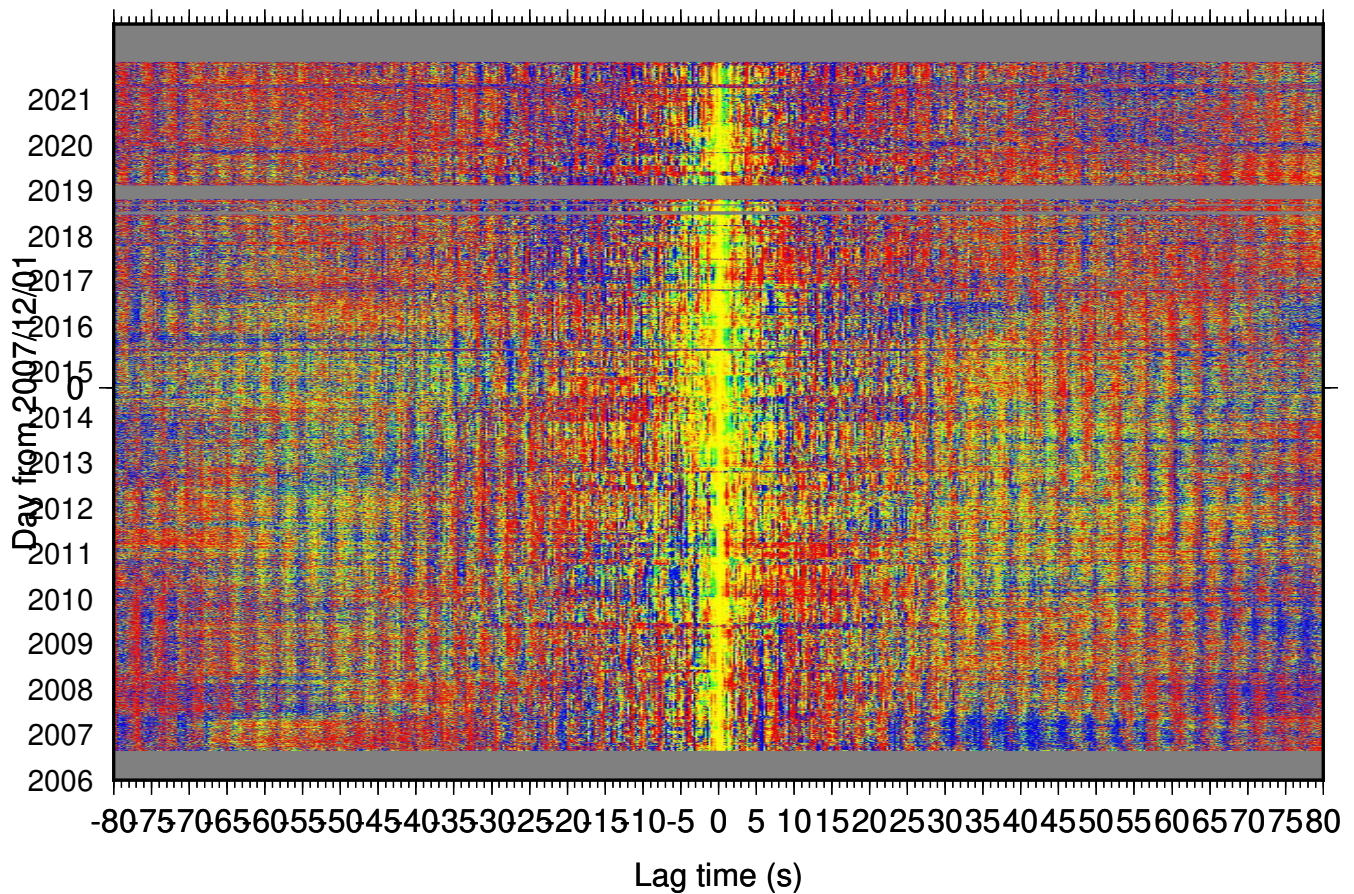
NC.GDXB-NC.GDXB SC.static\_1.0\_0.0\_120.0\_both\_0.85\_0.1\_0.5 1.00-4.00Hz 005\_DAYS



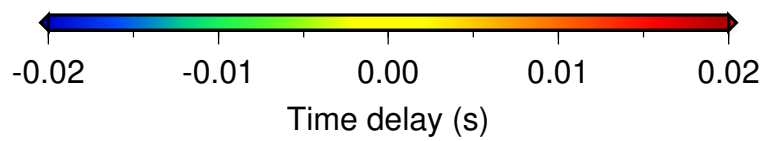
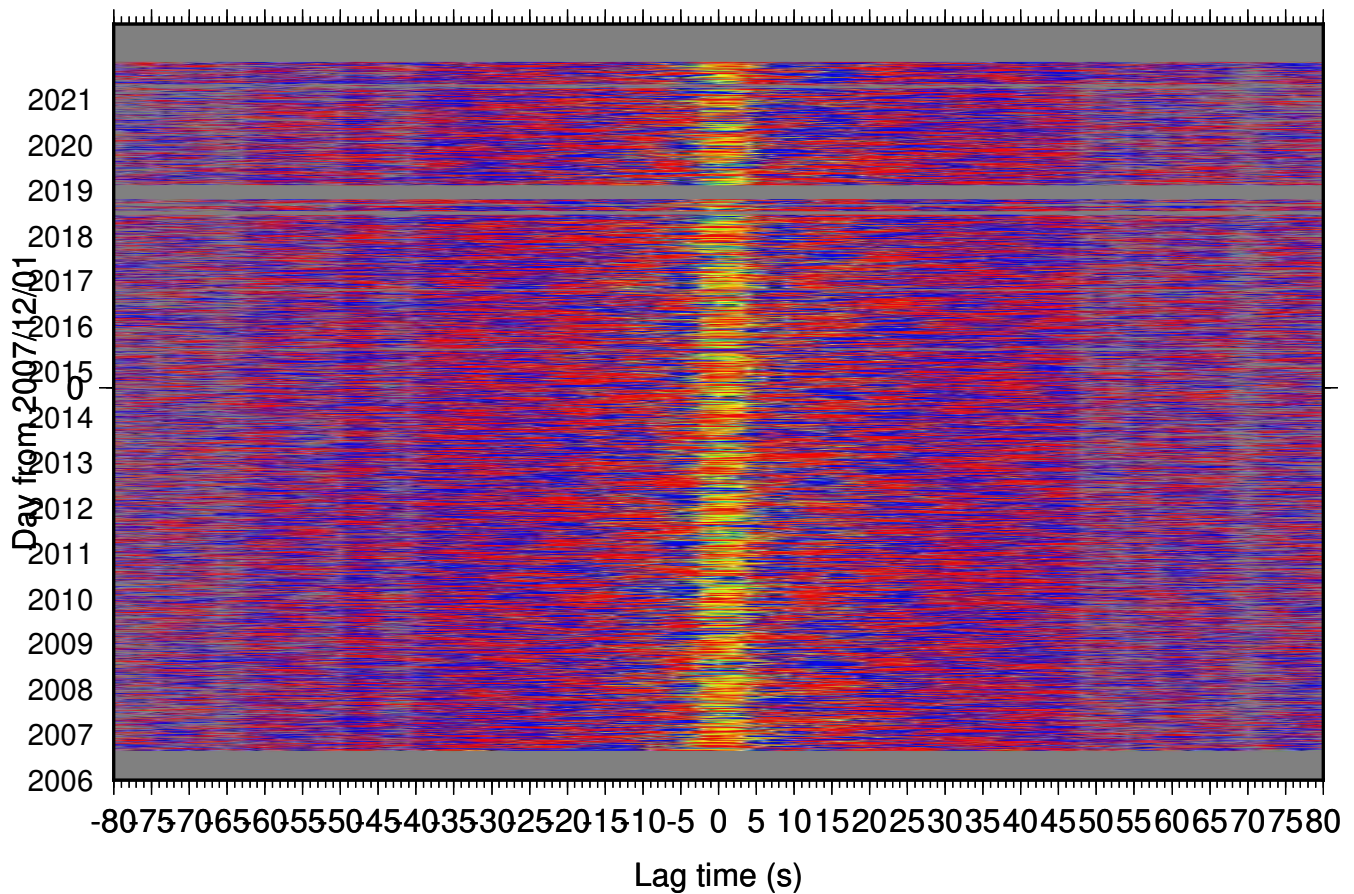
NC.GDXB-NC.GDXB SC.static\_1.0\_0.0\_120.0\_both\_0.85\_0.1\_0.5 1.50-6.00Hz 005\_DAYS



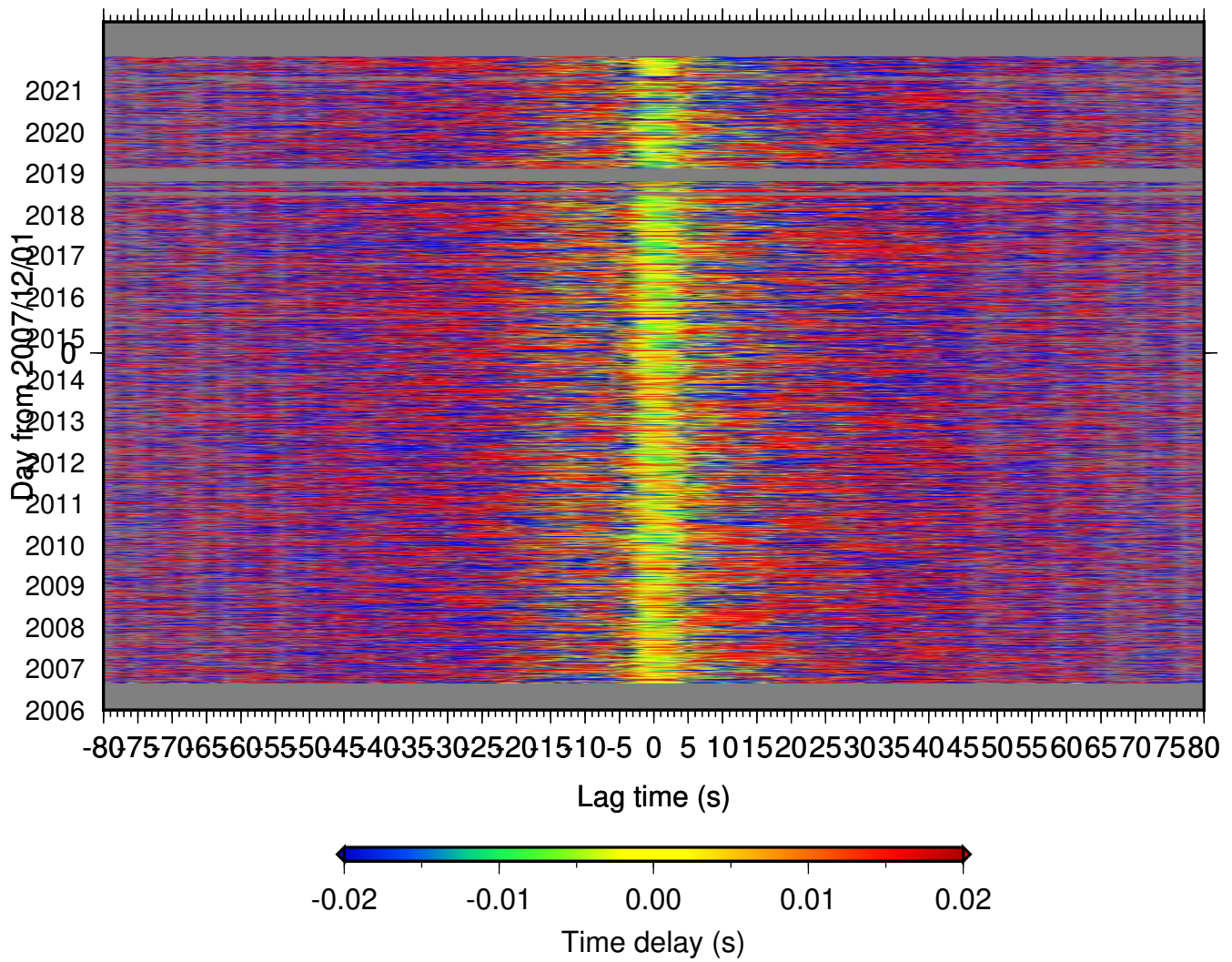
NC.GDXB-NC.GDXB SC.static\_1.0\_0.0\_120.0\_both\_0.85\_0.1\_0.5 2.00-8.00Hz 005\_DAYS



NC.GDXB-NC.GDXB SC.static\_1.0\_0.0\_120.0\_both\_0.85\_0.1\_0.5 0.10-0.50Hz 005\_DAYS

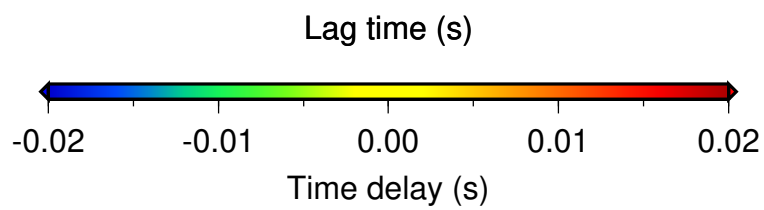
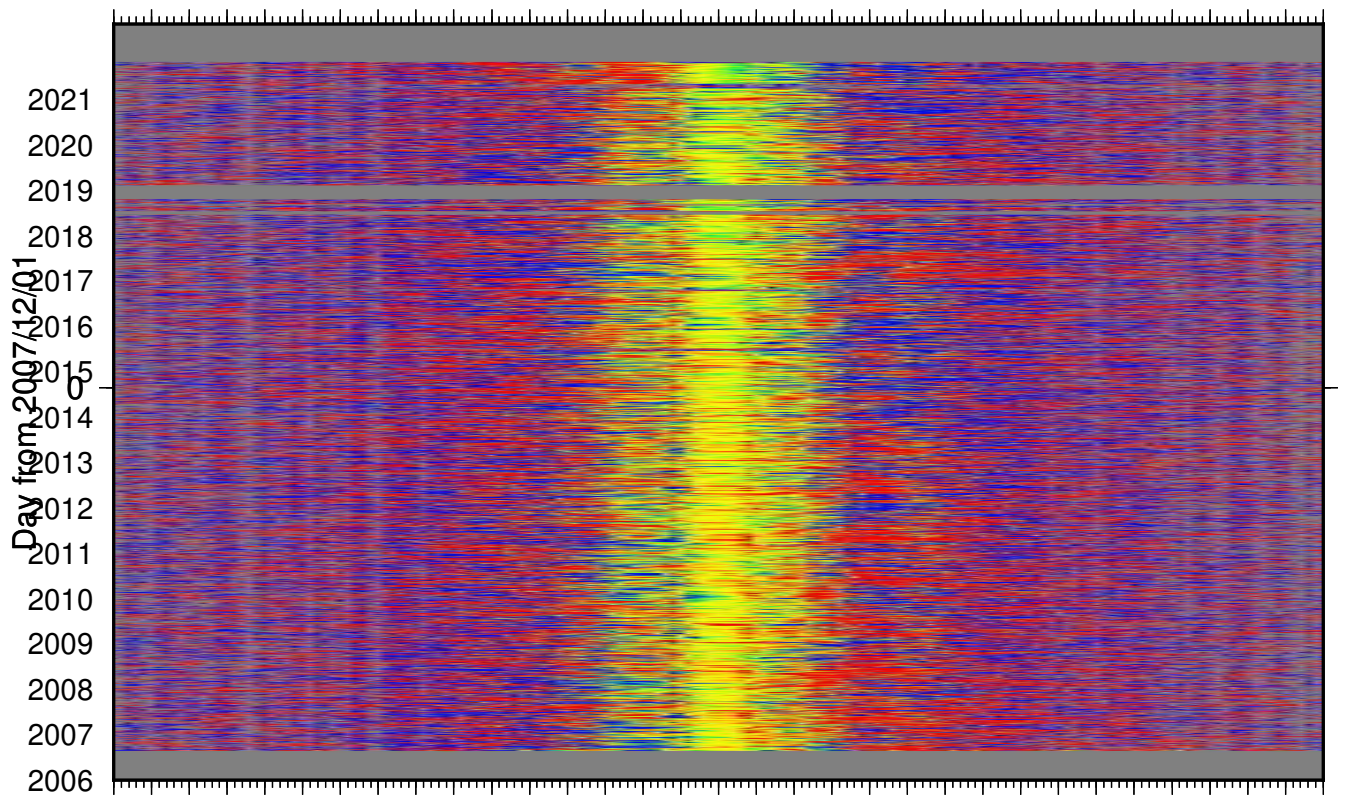


NC.GDXB-NC.GDXB SC.static\_1.0\_0.0\_120.0\_both\_0.85\_0.1\_0.5 0.30-0.70Hz 005\_DAYS

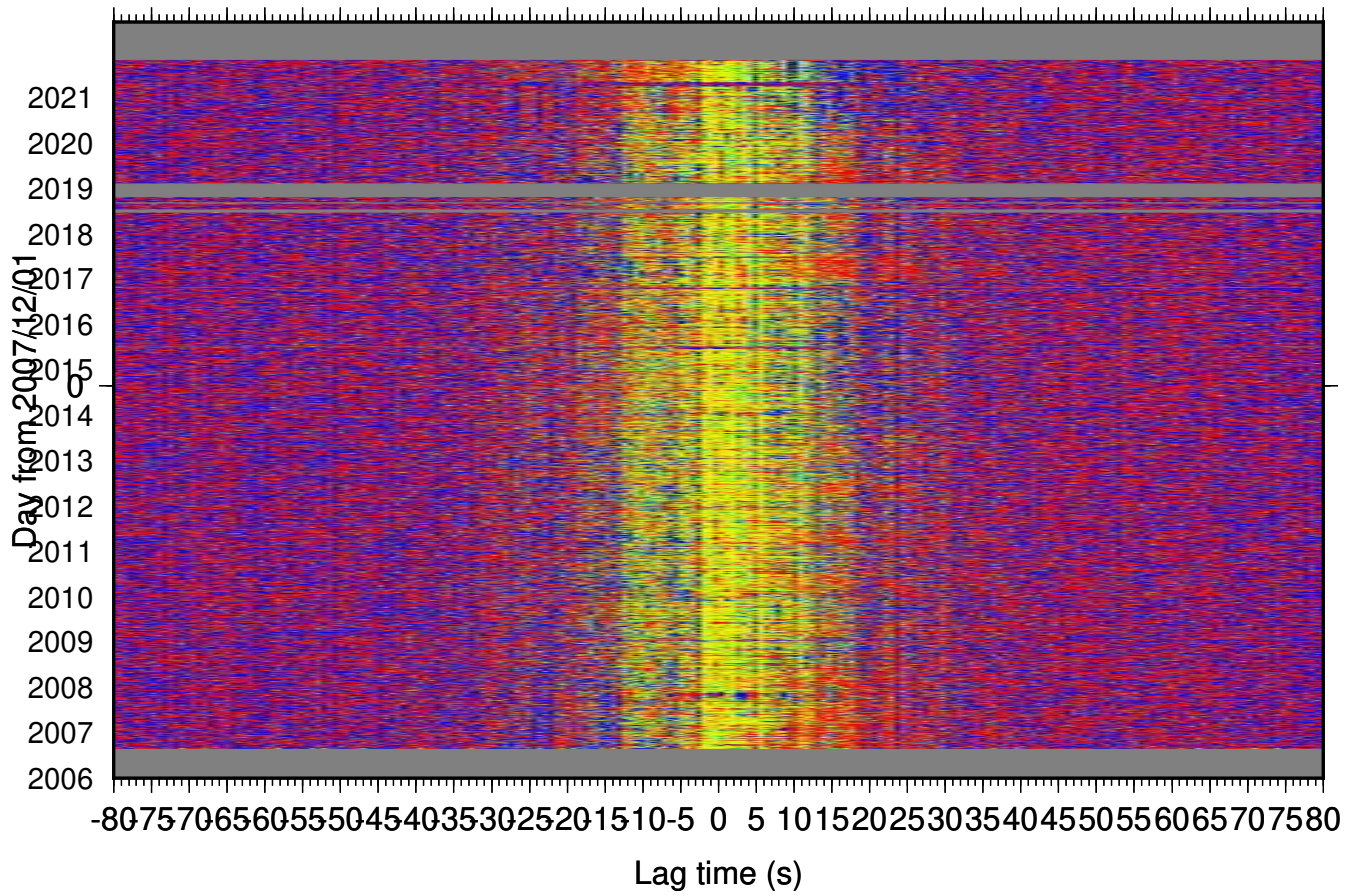




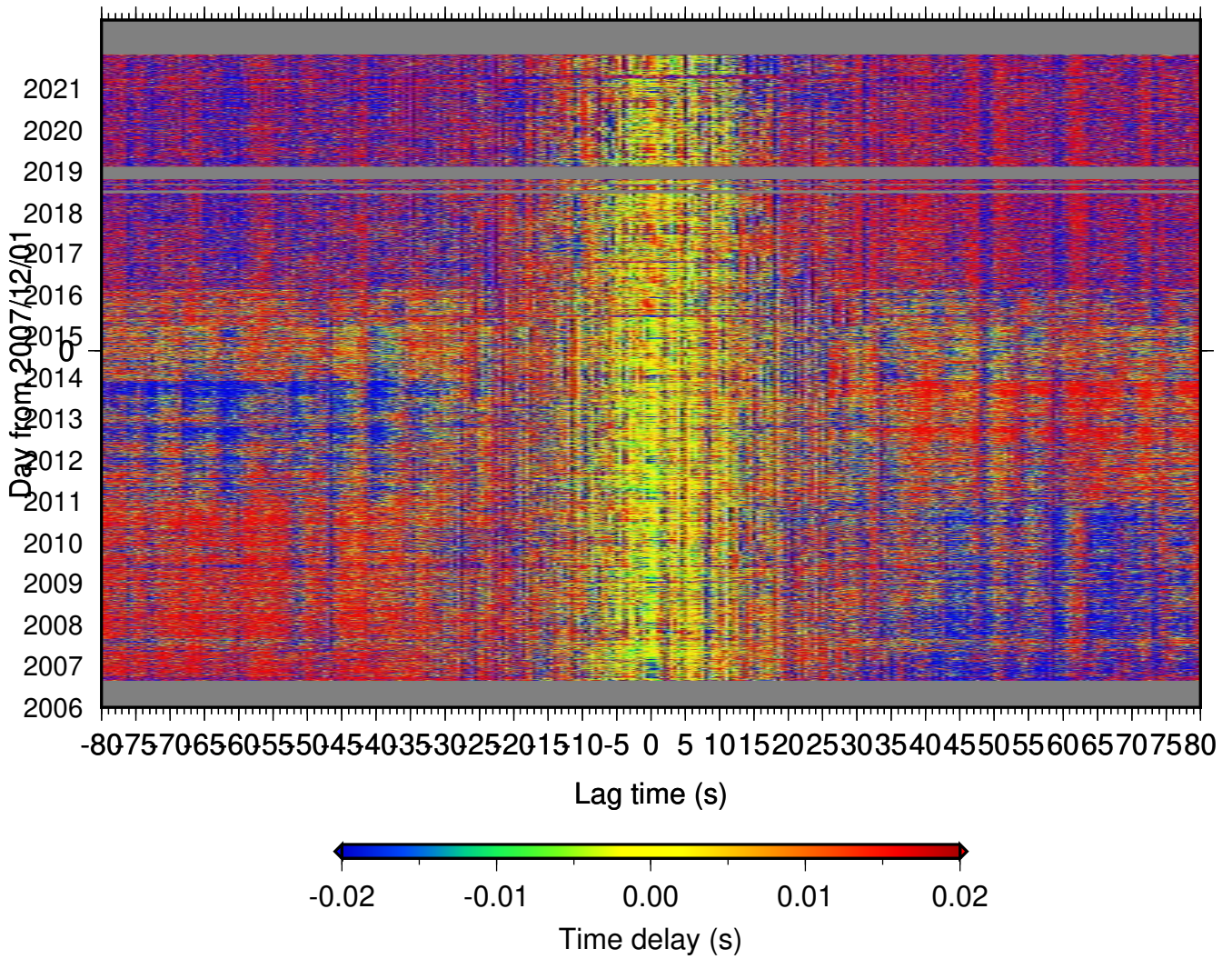
NC.GDXB-NC.GDXB SC.static\_1.0\_0.0\_120.0\_both\_0.85\_0.1\_0.5 0.50-0.90Hz 005\_DAYS



NC.GDXB-NC.GDXB SC.static\_1.0\_0.0\_120.0\_both\_0.85\_0.1\_0.5\_005\_DAYS



NC.GDXB-NC.GDXB SC.static\_1.0\_0.0\_120.0\_both\_0.85\_0.1\_0.5\_005\_DAYS



NC.GDXB-NC.GDXB SC.static\_1.0\_0.0\_120.0\_both\_0.85\_0.1\_0.5 005\_DAYS

